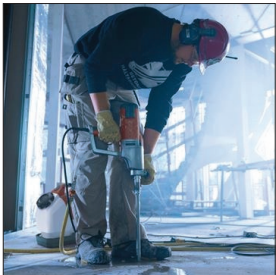


## DM 280



### TECHNICAL SPECIFICATIONS

MODEL	DM 280	
Spindle speed (rpm)	First speed	250
	Second speed	550
	Third speed	950
Recommended drill diameter (mm)*	First speed	200 - 350
	Second speed	100 - 200
	Third speed	50 - 100
Outer spindle thread	1 1/4" 7 UNC	
UNC water coupling	G 1/4"	
Weight (kg)	13.0	
Sound power level (dB (A))	97	
Sound pressure level (dB (A))	88	
ELECTRIC MOTOR		SINGLE PHASE
Power (kW)	2.7	
Voltage (V)	230	110
Speeds	3	



DS 500 / DS 250  
Pressurized water tank  
(Optional)

\*Drill bit not included.

Electric core drill for use with stand. The DM 280 is an ideal choice for medium core drilling up to 350 mm diameter. The motor is very easy to operate and features several ergonomic features facilitating drilling and set up. Suitable for water evacuation, ventilation, angle drilling and stitch drilling.

Distributor:



شركة الوسام للتجارة ط.م.م.  
**AL WISAM TRADING CO. L.L.C.**

☎ : (+971 6) 539 03 83      ✉ : awtc@alwisamllc.com  
☎ : (+971 6) 539 03 84      🌐 : www.alwisamllc.com  
📍 : 81933, Sharjah - U.A.E.